



**REGIONAL SPECIALISED METEOROLOGICAL CENTRE-TROPICAL CYCLONES, NEW DELHI
TROPICAL WEATHER OUTLOOK**

DEMS-RSMC TROPICAL CYCLONES NEW DELHI DATED 05.08.2024

TROPICAL WEATHER OUTLOOK FOR NORTH INDIAN OCEAN (THE BAY OF BENGAL AND THE ARABIAN SEA) VALID FOR NEXT 168 HOURS ISSUED AT 1500 UTC OF 05.08.2024 BASED ON 1200 UTC OF 05.08.2024.

LAND REGION:

SUB: DEPRESSION OVER NORTHWEST RAJASTHAN AND NEIGHBOURHOOD

THE DEPRESSION OVER NORTHEAST RAJASTHAN AND NEIGHBOURHOOD MOVED WEST-NORTHWESTWARDS WITH A SPEED OF 30 KMPH DURING PAST 6 HOURS AND LAY CENTERED AT 1200 UTC OF TODAY, THE 5TH AUGUST OVER NORTHWEST RAJASTHAN NEAR LATITUDE 27.6°N AND LONGITUDE 73.5°E, ABOUT 50 KM SOUTH-SOUTHEAST OF BIKANERR (RAJASTHAN), 120 KM EAST-NORTHEAST OF PHALODI (RAJASTHAN), 150 KM NORTH-NORTHEAST OF JODHPUR (RAJASTHAN) AND 270 KM EAST-NORTHEAST OF JAISALMER (RAJASTHAN).

IT IS LIKELY TO CONTINUE TO MOVE NEARLY WESTWARDS ACROSS NORTHWEST RAJASTHAN AND WEAKEN INTO A WELL MARKED LOW PRESSURE AREA DURING NEXT 12 HOURS.

BAY OF BENGAL:

SCATTERED LOW AND MEDIUM CLOUDS WITH EMBEDDED INTENSE TO VERY INTENSE CONVECTION LAY OVER BAY OF BENGAL AND ANDAMAN SEA.

***PROBABILITY OF CYCLOGENESIS (FORMATION OF DEPRESSION) DURING NEXT 168 HRS:**

24 HOURS	24-48 HOURS	48-72 HOURS	72-96 HOURS	96-120 HOURS	120-144 HOURS	144-168 HOURS
NIL	NIL	NIL	NIL	NIL	NIL	NIL

***NOTE: EVERY 24HR FORECAST IS VALID UPTO 0300 UTC (0830 IST) OF NEXT DAY**

ARABIAN SEA:

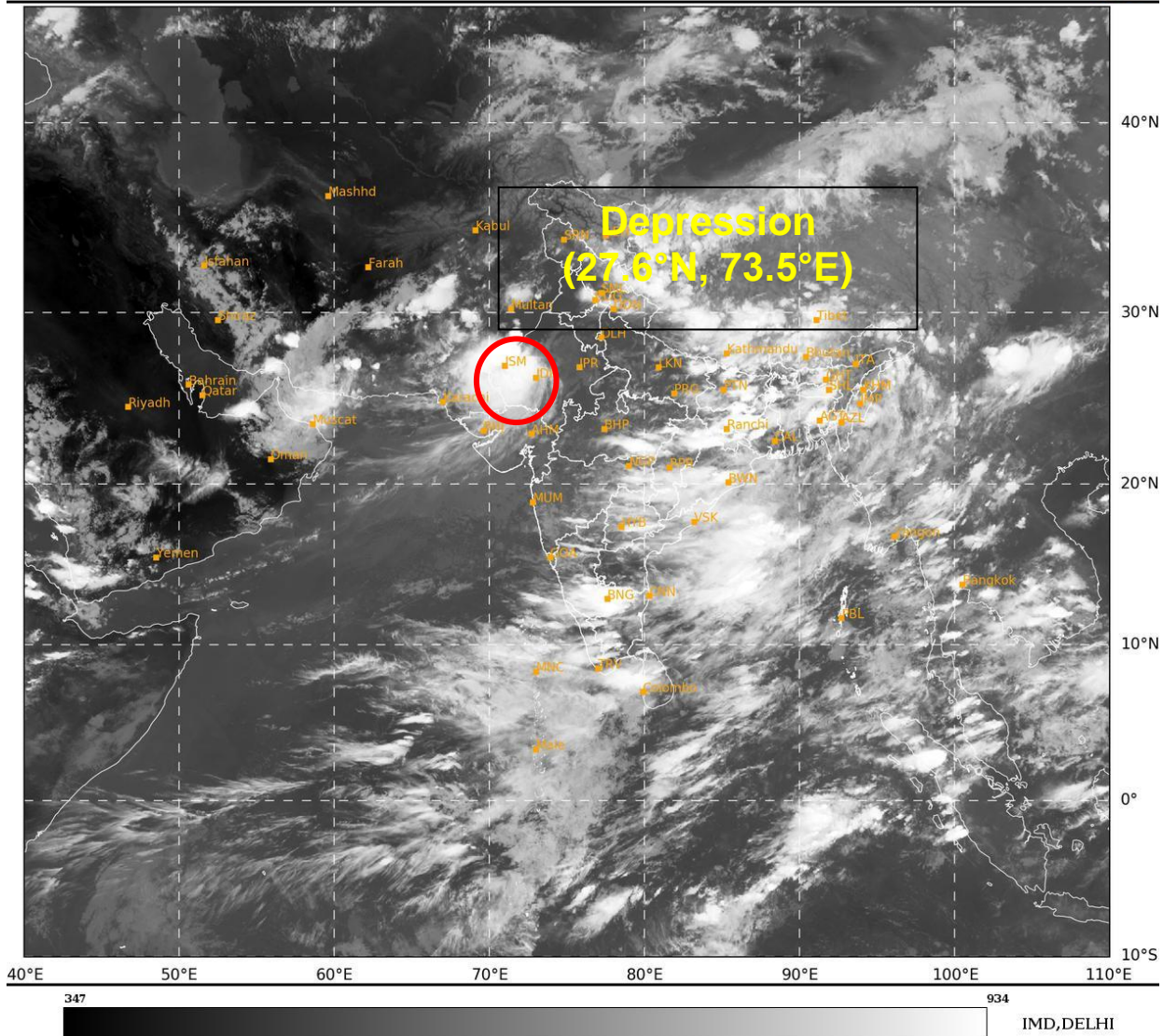
SCATTERED LOW AND MEDIUM CLOUDS WITH EMBEDDED INTENSE TO VERY INTENSE CONVECTION LAY OVER WEST MAKARAN COAST ADJOINING NORTH ARABIAN SEA. SCATTERED LOW AND MEDIUM CLOUDS WITH EMBEDDED MODERATE TO INTENSE CONVECTION LAY OVER SOUTH EAST ARABIAN SEA, GULF OF CAMBAY, LAKSHADWEEP ISLAND AREA & MALDIVES AREA. SCATTERED LOW AND MEDIUM CLOUDS WITH EMBEDDED ISOLATED WEAK TO MODERATE CONVECTION LAY OVER REST ARABIAN SEA.

***PROBABILITY OF CYCLOGENESIS (FORMATION OF DEPRESSION) DURING NEXT 168 HRS:**

24 HOURS	24-48 HOURS	48-72 HOURS	72-96 HOURS	96-120 HOURS	120-144 HOURS	144-168 HOURS
NIL	NIL	NIL	NIL	NIL	NIL	NIL

***NOTE: EVERY 24HR FORECAST IS VALID UPTO 0300 UTC (0830 IST) OF NEXT DAY**

REMARKS: NIL



Cloud distribution: (a) Isolated: <25%, Scattered:25-50%, Broken: 51-75%, Solid:>75%, Convection Intensity: (a) Weak: Cloud Top Temperature (CTT) >-25°C, (b) Moderate: CTT: - 25°C to -40°C, (c) Intense: CTT: - 41°C to -70°C and (d) Very Intense: : Less than -70°C
PROBABILITY OF CYCLOGENESIS (FORMATION OF DEPRESSION):NIL: 0%, LOW: 1-33%, , MODERATE: 34-66% AND HIGH: 67-100%
This is a guidance Bulletin for WMO/ESCAP Panel Member countries. Visit respective National websites for Country specific Bulletins